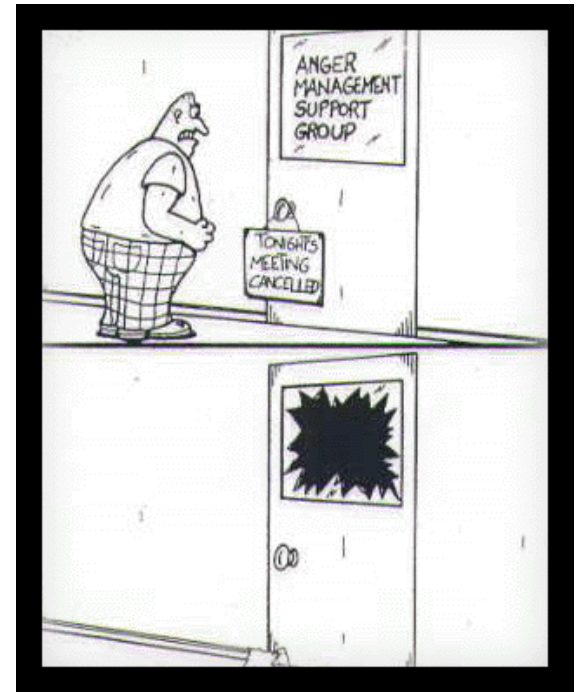


Defining Antisocial Spectrum



"When I'm good, I'm very good. When I'm bad, I'm better." (Mae West)

Comorbidity of Disorders in juvenile offenders

- 70-87% have psychiatric problems
- 50-80% have learning problems, special education, repeat grade
- 45-80% have conduct disorder
- 55% have character disorder
- 65% with IQ <70 engage in inappropriate sex behavior
- 35-50% mood disorder
- 30-50% anxiety disorder
- 20-40% attention/hyperactivity disorder
- 20-30% substance abuse

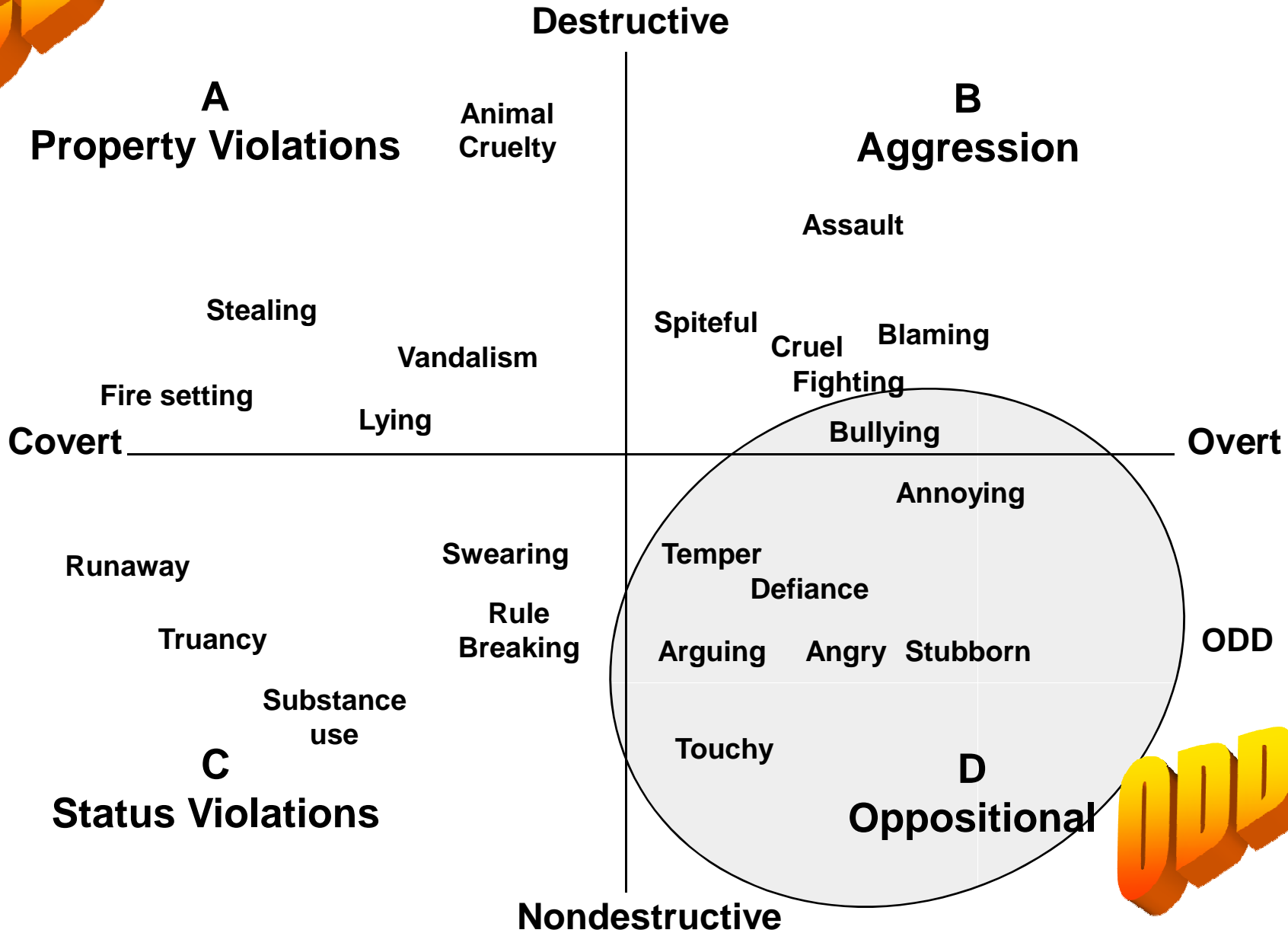


The Point:

- **There are usually multiple problems, influences, and modifiers that must be considered & treated**



60 factor analytic studies of 28,401 youth



(Frick, et al., 1993)

The appeal of Gangs

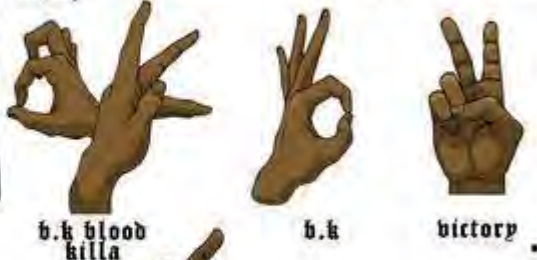
Gangs and cohesive juvenile groups often provide what the youth's family does *not* provide:

- a substitute for family closeness and intimacy
- safety and protection
- listening and acceptance of the person
- acceptance of deviant behavior
- reinforcement of deviant beliefs
- provide uniqueness and special status
- mutual stereotyping of others outside the group
- strong cohesion and boundaries
- channel for unconventional behavior and aggression



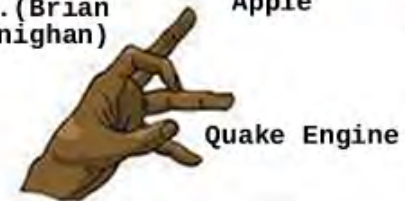
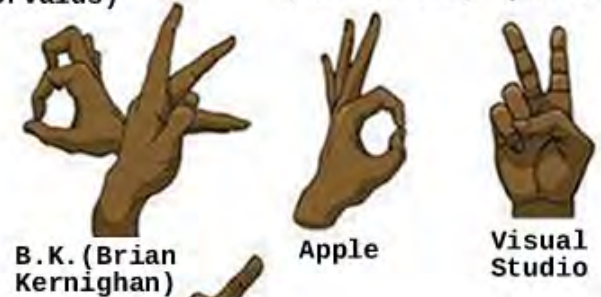
Gang Signs

These are just sum of tha gang signs used by l.a gang members



Geek Gang Signs

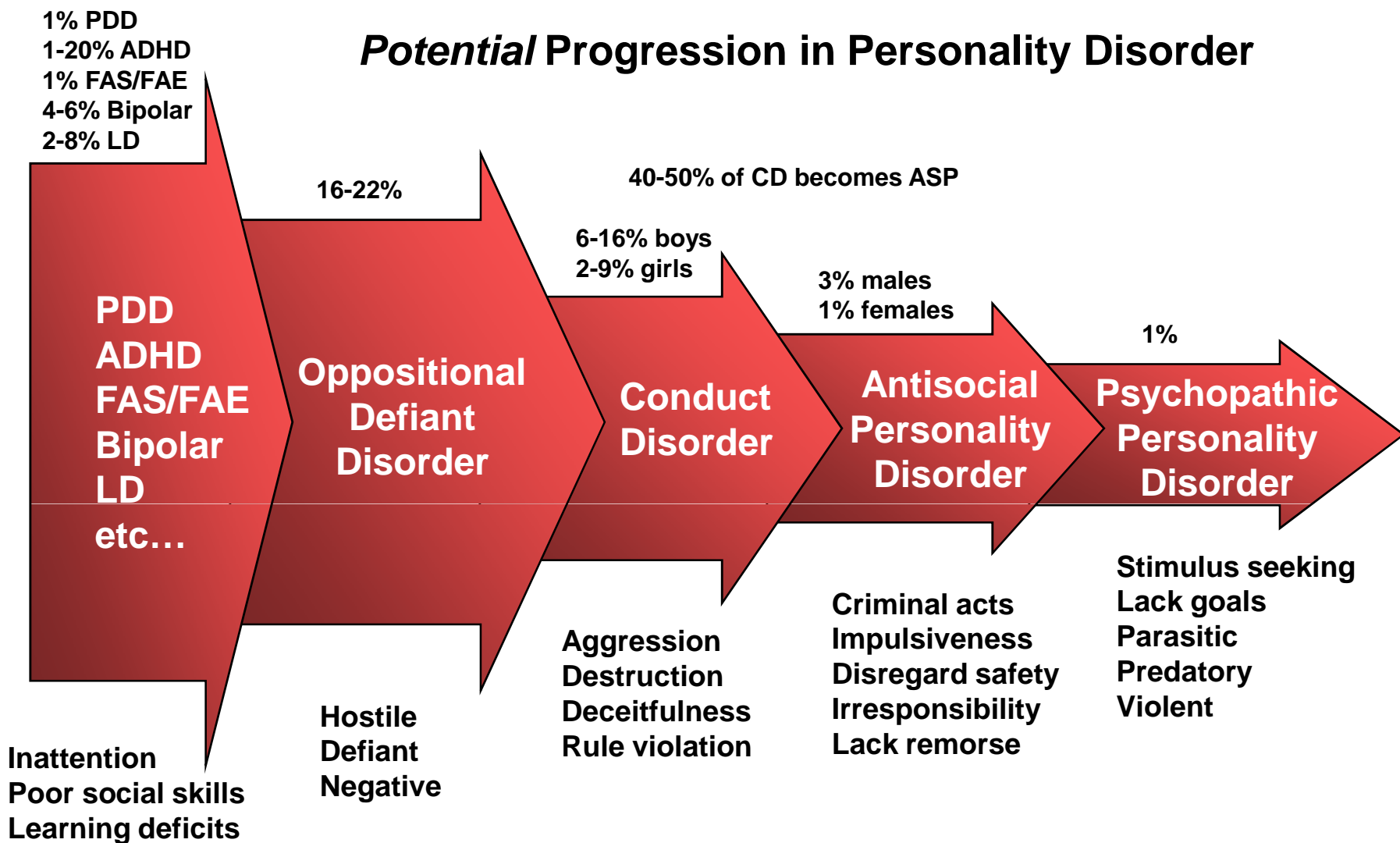
TH353 R JU57 50M3 OF T3H G4NG 51GN5
1MPL3M3N73D BY 1337 H4X0RZ



Oppositional Defiance → Conduct Disorder → Antisocial/Psychopathy

- | | | |
|---|--|---|
| 1. Loses temper | 1. Bullies, threatens, & intimidates | 1. Glibness/superficial charm (1) |
| 2. Argues with adults | 2. Initiates physical fights | 2. Grandiose sense of self-worth (1) |
| 3. Actively defies or refuses to comply with adults requests or rules | 3. Used weapon that can cause serious physical harm | 3. Failure to accept responsibility for own actions (1) |
| 4. Deliberately annoys people | 4. Physically cruel to people | 4. Pathological lying (1) |
| 5. Blames others for his/hers mistakes | 5. Physically cruel to animals | 5. Cunning/manipulative (1) |
| 6. Touchy or easily annoyed | 6. Stolen while confronting victim | 6. Lack of remorse or guilt (1) |
| 7. Angry or resentful | 7. Forced sexual activity | 7. Shallow affect (1) |
| 8. Spiteful or vindictive | 8. Deliberately engaged in fire setting with intentional damage | 8. <u>Callous/lack of empathy (1)</u> |
| | 9. Deliberately destroyed property | 9. Parasitic lifestyle (2) |
| | 10. Broken into someone's house, building, car | 10. Poor behavioral controls (2) |
| | 11. Lies to obtain goods or favors or avoid obligations | 11. Early behavior problems (2) |
| | 12. Stolen nontrivial items without confronting victim | 12. Lack of realistic, long-term plans (2) |
| | 13. Stays out at night despite parental prohibitions | 13. Impulsivity (2) |
| | 14. Run away from home overnight twice while living in parent/surrogate home | 14. Irresponsibility (2) |
| | 15. Truant from school | 15. Need for stimulation/proneness to boredom (2) |
| | | 16. Juvenile delinquency (2) |
| | | 17. Revocation of conditional release (2) |
| | | 18. Promiscuous sexual behavior (T) |
| | | 19. Many short-term relationships (T) |
| | | 20. Criminal versatility (Hare, 1986) (T) |

Potential Progression in Personality Disorder



80% of kids with ADHD as children carried it into adolescence, and 60% of those had developed ODD or CD. 100% of antisocial personality disorder have Dx as CD as youth.

Development of behavior disorders in youth

Environmental

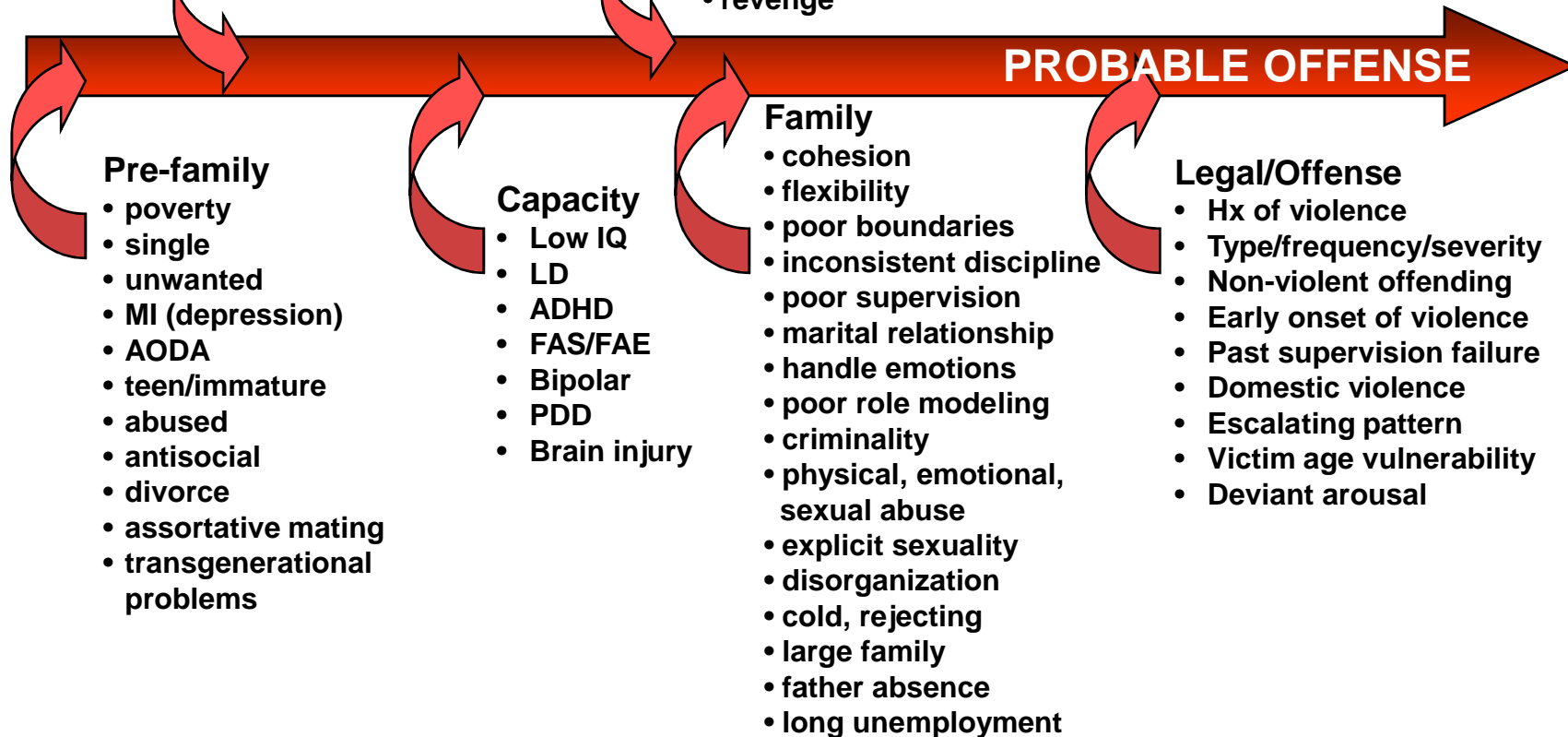
- pop. density
- poor housing
- mobile residents
- discrimination
- media violence
- cultural norms
- no support svc.
- discrimination
- crime rate

Infancy

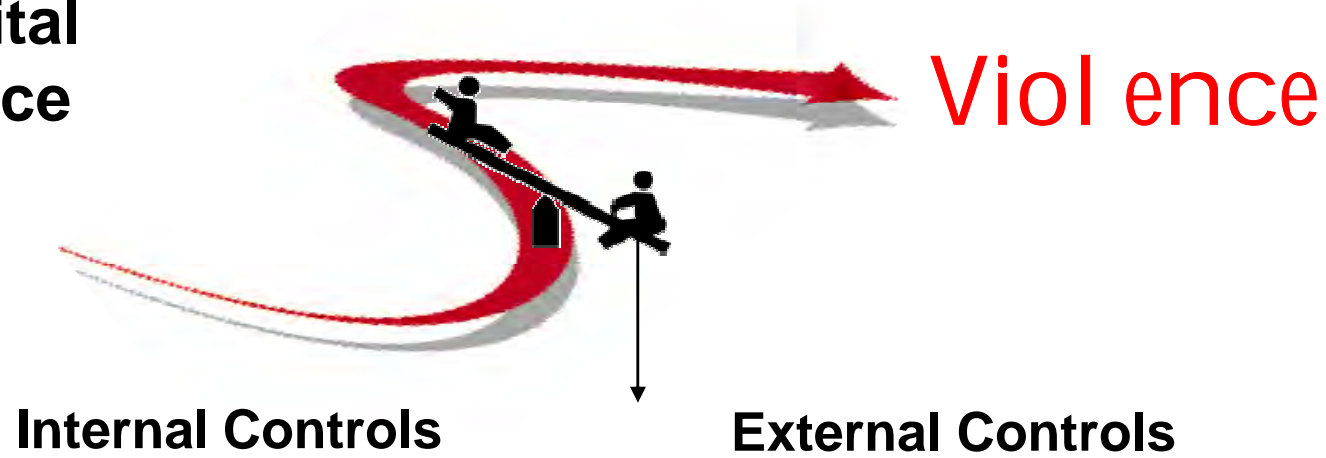
- Prematurity
- low birth weight
- brain injury
- attachment
- hyperreactive
- “colicky”
- unhealthy
- disability
- pain
- multiple placements

Peers

- delinquent/deviant peers
- antisocial sibs
- bullying
- rejection by norm group
- attention/recognition
- belonging
- act out
- revenge



The Vital Balance



Personality-- What prevents *you* from offending?

- values (“It’s wrong”)
- empathy (“it would hurt others”)
- consequences (“I’d get in trouble”)
- ego dystonic (“that’s not me”)
- shame/embarrassment (“what would others think”)
- esteem (I’d feel awful”)
- identification (“wouldn’t want that to happen to me”)
- personal responsibility (“I would be responsible”)
- self monitoring & control (“I’d stop myself”)
- coping (“other ways to deal with tension”)

Support

- Nurturance
- Feedback
- Availability
- Consistency
- Positive involvement

Sanctions

- Intensive supervision
- Legal charges
- Elec. Monitoring
- Placement

Key Points in Child Development

- Inheritance provides the potential, but experience shapes antisocial expression
- Early onset of conduct problems is worse than onset
- Parental and family dynamics are an essential part of treating youth
- Antisocial behavior is essentially a failure in socialization, empathy, and values
- Antisocial development occurs throughout early and teen development and provides many intervention points
- Aggressive and antisocial behavior tends to be stable over the years without intervention
- The ratio of risk to protective factors strongly influences antisocial development
- There are different pathways to conduct disorders in youth

