



WISCONSIN INDIANHEAD TECHNICAL COLLEGE

WITC Emergency Services Conference

March 15-17, 2012



WISCONSIN
INDIANHEAD
TECHNICAL
COLLEGE



WITC 30th Annual Emergency Services Conference

Welcome to the 30th Annual WITC Emergency Services Conference. We have planned a great lineup of class offerings again this year. You will note that we have a new schedule format which will make your session choices a lot easier. We hope you will enjoy your learning experience at the WITC Rice Lake Campus along with the shopping and entertainment opportunities in Rice Lake.

Jack Running
Conference Director

Class Availability

Check for session availability via the web at www.witc.edu/esconference. Site will be updated as sessions become full.

Refund Policy

If you are unable to attend the conference after you have registered, please call Jamie Warnberg at 800.243.9482 ext. 5488, before noon on, **Monday, March 5**. **ALL refunds must be requested by this date.**

Mail, fax, or phone registrations to:

MAIL: WITC Emergency Services Conference
ATTN: Carolyn Anderson
1019 South Knowles Ave
New Richmond, WI 54017

E-mail: carolyn.anderson@witc.edu

FAX: Carolyn at 715.246.2777

PHONE: 800.243.9482 or 715.246.6561 ext. 4319

Schedule At A Glance

Thursday, March 15, 2012

7 am - 8 am	Welcome & Registration
8 am - 12 pm	Morning Conference Classes
12 pm - 1 pm	Lunch Break
1 pm - 5 pm	Afternoon Conference Classes

Friday, March 16, 2012

7 am - 8 am	Welcome & Registration
8 am - 12 pm	Morning Conference Classes
12 pm - 1 pm	Lunch Break
1 pm - 4:45 pm	Afternoon Conference Classes
4:45 pm - 5:30 pm	Keynote, "Soaring with Eagles While Surrounded by Turkeys", Tim Holman

Saturday, March 17, 2012

7 a m - 8 am	Welcome & Registration
8 am - 12 pm	Morning Conference Classes
12 pm - 1 pm	Lunch Break
1 pm - 5 pm	Afternoon Conference Classes

Thursday All Day Classes (8 hour)

Coaching Concepts for Officers (E/F) Course 100

Tim Holman, Chief, German Township Fire & EMS

Don't you wish your officer's badge came with an instruction manual? Well, now it does. This program will provide insight in dealing with the four types of people in your organization. It will provide you with a step-by-step approach in correcting performance issues. It will examine why people don't perform and how the officer should respond.

"SCOPE" – Special Child Outreach Prehospital Education- "Peds - mersion" (E) Course 101

James Levi

This all day session will be a pediatric immersion course for EMTs and First Responders so they can focus on their pediatric assessment skills in a scenario based format.

Max Enroll 30

EMR and EMT Basic licensure preferred

Water Rescue – Cold Water and Ice Rescue Emergencies (E/F) Course 102

WITC Instructors

You will learn how to safely respond to incidents involving cold water and surface ice rescue. Safety precautions for responders and care of patients will be reviewed. Students should bring available cold water rescue suits, PFD's, and dress appropriately for working outside on the ice. WITC will also have a limited number of Ice Rescue suits available for student use. Entry into the water is not mandatory for students who want to focus on shore based support.

Max Enroll 20

I.C.E. – 32 Degrees Beyond Tradition (F) Course 103

Aaron Harris, Chief Middleton Fire Dept

In today's fire service, it's vital to remain fluid...a single degree can make all the difference. I.C.E. (**Incident, Command, Execution**) instructors guide you through 32° that are heating things up across the country and keeping things cool at home. An effective operation demands an essential combination of time-proven tactics with innovative and forward-thinking.

A non-technical challenge engages attendees to look beyond the obvious to gain an insight into concepts like Air Management, Speed of Attack, GPS Critical Flow, Ultra High Pressure Rapid Response, the Single Championship Team Philosophy and more. Each of the 32° encompass a potentially new subject matter that can give your team the edge in the fire station, the fire-ground and life itself.

The experience of Team I.C.E. spans the State of Wisconsin and departments, both volunteer and career. Chief Aaron Harris, Assistant Chief Andrew Harris, and their father, Retired Chief Ted Harris, share their family's unique history to help bring it home. Growing up in their father's firehouse and television studio, working for such notables as ESPN, the History Channel, NASA, E!, and the Discovery Channel, the Harris' media background helps expedite the learning process through an entertaining and interactive multi-media experience. I.C.E. • 32° Beyond Tradition is a truly unique and proven methodology involving all aspects of the Fire Service. **Full PPE including SCBA is required.**

Class Full/Closed



Thursday Afternoon Classes (4 hour)

Ice Rescue Refresher Training (E/F) Course 104 WITC Instructors

This class is for students who have already had basic Ice Rescue training and who would like to advance their skill level. This hands-on course will educate students on how to safely respond to incidents involving cold water and surface ice rescue. Safety precautions for responders and care of patients will be reviewed. Students should bring cold water rescue suits, PFD's and dress appropriately for working outside on the ice.

Max enroll is 20

Prerequisite- Basic Ice Rescue Training

Confined Space and Trench Rescue Emergencies – Awareness Level (E/F) Course 105

WITC Instructor

The disciplines of Confined Space Rescue and Trench Rescue are significantly dangerous to the untrained first responder. This class will provide an overview of OSHA and industry standards for these types of emergencies. Review past incidents and learn the understanding of what your agency is allowed to do, and responsible for, when confronted with these emergency situations. This class is an awareness-level class and would be beneficial to any emergency responder.

Class Full/Closed



The power of collaboration when it's critical

Meeting the needs of trauma patients requires the best resources on scene and swift, safe, care and transport to the appropriate hospital. Through the power of collaboration, Mayo Clinic Medical Transport brings Mayo Clinic to you and your neighbors for life by ground or in the air.



©2011 Mayo Foundation for Medical Education and Research

Friday All Day Classes (8 hour)

Leadership Rules of Engagement (E/F) Course 200

Tim Holman, Chief of German Township Fire & EMS
Leadership. It's not about ego. It's about serving the people you lead. It's about we, not me. It's about making the organization better today than it was yesterday. It's about integrity and doing the right thing even when it hurts. It's about helping other people be successful.

I.C.E. – 32 Degree Fahrenheit Course 201

Aaron Uhl, Chief of German Township Fire & EMS
(8:00 AM – 12:00 PM)

Advanced Vehicle Systems / Alternative Extraction Techniques (E/F) Course 202

Butch Lysholm & Ron Shaw

This is an advanced level classroom/hands on extrication skill program for all emergency personnel that respond to motor vehicle crashes. The 4 hour classroom portion, "HEV's, PHEV's, BEV's – Oh My, The New Power Train Era Has a Gun", deals with new vehicle design, stop-start systems, rest, and plug in electric vehicles. It also discusses that first responders may encounter at the scene of a motor vehicle crash. The 4 hour hands on portion, "Vehicle Extraction: Alternative Extraction Techniques," is designed to increase the student's efficiency at the scene of a crash involving any type of vehicle. Alternative extrication techniques will include the Modified Dash Roll and techniques specifically designed to be utilized with hybrid and plug-in hybrid vehicles.

Prerequisite - Attendees will need to have completed a basic extrication skills class and have a working knowledge of hand extrication tools. Full turn-out gear and eye protection. Dress appropriately for the weather. Max enroll is 24.

Truck Company Skills for Small Departments (F) Course 203

WITC Instructor
Truck Company Skills... Forcible Entry, Ventilation, Ladders, Utilities, Search and Rescue, Salvage and Overhaul... are all essential fire department activities. Occasionally, fire departments are granted a larger budget. However, proper focus they desire. This course will focus on tactics and skills for small, short-staffed fire departments. Students will learn valuable mental and physical skills that will enable them to multi-task and address essential truck company functions. **Full turn-out gear, eye protection, and hearing protection required. Max Enroll 24**

Recruitment and Retention of Your Next Generation Member (E/F) Course 204

Rich Gasaway and Cameron Gasaway

The Generation Y is 70 million strong and they're going to be your next crop of new firefighters and EMS responders. They're changing the rules for successful recruitment & retention. This program takes a three-pronged approach to preparing you and your organization for the Generation Y worker.

To start, you're going to be introduced to two prospective employees. Your first candidate is the stereotypical Gen Y teen. He's chillin', saggin', textin', Ipodin', X-Box playin' and Facebookin'. He's coming to you with no credentials and unreasonable demands. He's going to tell you how it is! He is who he is and he ain't changin' to conform to what he sees as antiquated ways of management. Are you ready? Next, you'll be introduced to the not-so-stereotypical Gen Y teen. He's an Eagle Scout, honor student, and national EMS competition award winner. He's coming to you with quality credentials and very high expectations. He's going to tell you how it is! And, like his fellow Gen Y teen, he's not changing to conform to what he sees as antiquated ways of management. Are you ready?

Finally, to help you manage through this quagmire, you will participate in a discussion facilitated by a public safety leader with 30+ years of experience and the contributing author of several books.

Friday Morning Classes (4 hour)

Trauma: Three Experts share case studies (E)

Course 205

Thomas Fryer, RN, Mayo Clinic Medical Transport flight nurse, discusses transfusing blood products in the air medical environment. Mayo One has been carrying packed red blood cells since 1988 and thawed plasma since 2009. Due to the lack of availability and relatively high costs of blood products, many communities do not have access to blood products in the pre-hospital and community hospital setting. A review of blood product administration indications, such as physical assessment, mechanism of injury, and laboratory value findings in the air medical environment will be reviewed. In addition, several case presentations will be discussed in which blood products have been administered during air transport.

In part two of this session *Dr. Mark Herr, Orthopedic Surgeon*, discusses Orthopedic Trauma: Broken Bones & How We Fix Them. This session will involve case studies in orthopedic trauma, - how the patient presented, how they were treated, and follow up care and X-rays.

This session concludes with *Donald H. Jenkins, MD, Medical Director, Mayo Clinic Level I Trauma Center*, presenting Military Medical Innovations: Translation to Civilian Trauma Care. Join Dr. Donald Jenkins, the former Director of the Joint Trauma System for the Department of Defense, and current Chair of the Trauma and Injury Subcommittee of the Defense Health Board, as he discusses numerous innovations by military medics in our current conflicts- from tourniquets to 1:1 transfusion - and the application of those lessons learned and patient care therapies into the civilian trauma care setting.

End of the PALS Algorithm (E)

Course 206

James Levi

This session consists of a panel of presenters led by an MD familiar with the practice of rural medical direction. He will discuss the cessation of pediatric resuscitation. As ACLS and PALS progress toward cessation of efforts in the field and soon after arrival at the hospital setting, it is important to understand the ramifications of “calling the code”, especially a pediatric code.

Medical Emergencies: Three experts share case studies (E)

Course 207

Dr. Regis Fernandes, Cardiologist and Dr. Fearghas O’Cochlain Interventional Cardiologist, discuss how many EMS providers use ECGs in the field to alert hospital staff to the most serious type of heart attack, or STEMI, ST elevation myocardial infarction. In a STEMI, critical arteries supplying the heart with blood are blocked. The sooner patients can have their arteries opened with balloon angioplasty and stenting, the greater the chance of survival. Collaboration with area EMS providers has helped Mayo Clinic Health System in Eau Claire respond faster than the national standard of 90 minutes for “door-to-balloon time.”

In part two of this session a *LVAD Coordinator*, from Mayo Clinic will give a brief overview of the expanding VAD therapies and technologies people are living with in our communities. Care and management considerations of the VAD patient for Emergency Department physicians and pre-hospital emergency medical providers will be discussed. The goal of the presentation will be to provide participants with an organized approach for managing a VAD patient with a medical emergency.

This session concludes with Dr. Jonathan Bledsoe, presenting Hypothermic Therapy for Spinal Cord Injuries. He will present case studies in how cooling a patient has impacted treatment and recovery of patients who have suffered traumatic spinal cord injuries.

Geriatric Emergencies Come In all Shapes and Sizes (E)

Course 208

Dr. Richard Pebler

This session will deal with three of the more common ailments afflicting the geriatric population today. Stroke, high blood pressure, and diabetes affect countless scores of individuals over 62 years of age. We need to be aware of the warning signs and symptoms that sometimes manifest themselves to us as we assess our patients in this age group. Join Dr. Pebler in a lively discussion of the assessment and treatment of geriatric patients suffering from these common maladies.

Friday Morning Classes (4 hour)

Multi-Gas Air Monitors: How to Use Them Effectively (E/F) **Course 209**

WITC Instructor

Many Fire and EMS agencies carry air monitoring equipment. Do you know what you are doing with them? You will learn how to properly perform monitoring activities at structural fires, strange odor calls, gas leaks, and hazmat incidents. Students will learn the limitations/strengths of the monitors, how to interpret the readings, how to calibrate/maintain the instrument, and learn to use the instrument to increase safety for the responder. While not required, students are encouraged to bring their air monitors to the class.

Foam & CAFS Use & Operations (F) **Course 210**

Clarence Grady & Kevin Pomasl

You will review the types of foam and how they are used on, and their effectiveness. Discussion of the types of foam and the way to administer foam. Discussion of Compressed Air Foam basics, how a CAFS system works, uses for CAFS, nozzles to use with CAFS, and effectiveness of CAFS. Hands on work with a CAFS truck will be performed.

Max enroll is 25.

Trauma 911 – A Pediatric Perspective (E) **Course 211**

Sarah House, MICT

Whether you describe it as curiosity, daring, playing or accident, risky, or dangerous; kids will be kids. They try new things, test new limits and push themselves further with every generation. Consequences are often an afterthought and safety is rarely considered. Whether they are toddlers trying to reach something too high, younger children trying stunts on their bicycles, or adolescents working towards a college scholarship, trauma touches everyone's lives at some point. Through a fun and interactive session, we will dive into children's adventurous spirits to review the basics of pediatric trauma with those unique factors you often forget, discuss three types of trauma that frequently affect children, summarize pediatric trauma assessments, treatment, and prevention, and bet it all on a high stakes game of Trauma 911.

Class Full/Closed



Friday Afternoon Classes (4 hour)

The Art of Reading Smoke (F)

Course 212

Greg Hayes

As a firefighter, we are trained to look at fire coming from a building. Before we see fire on the exterior of a structure, there is smoke. The goal of this course is to introduce the basic approach of “reading” smoke when arriving at a structure fire. You will learn the four concepts of smoke reading: Volume, Velocity, Color and Density. This concept is based on basic fire behavior principles learned in firefighter I & II as well as what we have all experienced on the fire ground. Every firefighter and fire officer needs to learn this concept so that they can make better risk management decisions.

Domestic Violence (E/F)

Course 213

Julie Schuppel, RN

Part one of this session will present the dynamics of domestic violence including types of injuries seen with domestic violence, injury documentation and reporting to law enforcement guidelines. Case studies will be included.

Part two of this session will teach a student to identify the signs and symptoms of strangulation. You will be able to accurately document a strangulation incident and provide an appropriate medical evaluation for a strangulation patient.

Environmental Emergencies (E/F)

Course 214

Ben Wedro, MD, FACEP, FAAEM

Cold water drowning - this presentation will focus on the physiological changes that occur with hypothermia and their effects on the resuscitation of cold water drowning victims.

Heat related illnesses - emphasis will be placed on pre-hospital assessment and treatment including heat cramps, heat exhaustion and heat stroke. Focus will be placed on the risk of this illness in competitive and recreational athletes and preventive measures.

Anaphylactic shock - the spectrum of allergic reactions will be addressed, and physiology will be emphasized, so that treatment approaches may be individualized for specific patient presentations.

The Big Bad Wolf of Pediatric EMS (E)

Course 215

Sarah House, MICT

Hot Baby Hot – Pediatric Vehicular Hyperthermia
Over the past decade pediatric vehicular hyperthermia related deaths have been on the rise. This presentation will demonstrate the causes of these deaths, who it happens to, and what can be done to prevent this tragedy from occurring.

Cars are not Playgrounds – Non Traffic Fatalities Involving children – This lecture will venture into the new concepts of non-traffic fatalities involving children, review case studies involving these incidents, and discuss resources available to educate others.

Beyond Autopilot-Dealing with the Death of a Child–healthcare providers are educated on how to recognize signs of death, how to resuscitate, and when not to. Educating providers on what to do after that determination has been made has been grossly overlooked. This presentation will guide providers down the path of dealing with the death of a child before, during, and after the incident.

Survival Tactics for EMS Providers (E/F)

Course 216

Eric Dickinson, BS, EMT-I Iowa County EMS

EMS providers are trained to consider scene safety as the first step in any call or patient contact. More often than not, EMTs and paramedics do not consider all of the potential dangers involved in the typical EMS response. In this entertaining and informative presentation, participants will discuss the concepts of scene safety and situational awareness. Violent patients and patients suffering acute behavioral crises will be discussed, including assessment and interviewing techniques, and how to identify and defuse and/or escape possible dangerous situations and patients.

Trauma: Three Experts share case studies (E)

Course 217

Thomas Fryer, RN, Mayo Clinic Medical Transport flight nurse, Dr. Mark Herr, Orthopedic Surgeon, Donald H. Jenkins, MD, Medical Director, Mayo Clinic Level I Trauma Center

(See page 7 for description)

Friday & Saturday Class (16 hour)

Wilderness Search Techniques (E/F) Course 300

Rick Slatten, Debbie Slatten, Patricia Sanchez

Target Population: New, novice, or experienced field team members; field team leaders; search planners and managers; specialty resource team members; command/general staff.

This proficient-level block teaches: personal preparation and the qualities of a rescuer, dispatch and pre-staging, staging and intelligence gathering, search strategies, search resources and tactics, unusual situations, why searches go bad, introduction to Search Theory, and improving visual acuity. Also included is a comprehensive Land Navigation component that features: Compass familiarization, usage techniques, declination, field-expedient compasses; USGS 7.5-minute series maps, border information, map feature classes and symbology; position plotting; movement techniques; and forced-error navigation.

Students will receive instructional handouts, case study handouts, land navigation protractor, Lat/Lon ruler, and an Area Estimator Matrix, as well as the latest edition of Sweep Width Tables for Northern Minnesota/Wisconsin searches.

At the conclusion of the classroom/lab component on Saturday, students will have the opportunity to participate in a mock search for a simulated missing person. Students should come prepared to “Go” in any weather, as well as bring a compass, preferably the one they will use on an actual search.

Max Enroll 60



Keynote Speaker (Friday 4:45 pm)



Soaring With Eagles While Surrounded By Turkeys

Tim Holman

Let's face it, not everyone is as excited about their job as you are. Some seem to come to work just to cause you problems. So how do you thrive in an environment like this? Like eagles, leaders are found one at a time. This powerful keynote address provides tips to be successful when you are surrounded by people who just don't seem to care. The traits of eagles are compared with the traits necessary to be a great leader.

Tim Holman serves as chief of the German Township Fire & EMS in Clark County, OH. He received his CFO designation in 2003 and was Fire Chief Magazine's 2002 Fire Chief of the Year.

A 29-year veteran of the fire service, he has an extensive background in health care management, fire service, and organizational development.

As a speaker and seminar leader, Holman has conducted programs throughout the United States on a variety of fire and EMS management and leadership issues. As a member of the National Speakers Association, he receives frequent requests to speak at conferences and retreats and is known for presenting unique and motivating programs that give practical solutions to today's hectic and demanding world. Holman also has written numerous articles for national journals and has published three books.

Saturday All Day Classes (8 hour)

Mental Management of Emergencies (E/F) Course 400

Rich Gasaway and Cameron Gasaway

Situational awareness is the leading contributing factor for near-miss and line-of-duty deaths among first responders operating at emergency scenes. If we are going to reduce responder casualty incidents, we must first improve the ability of our responders to develop and maintain situational awareness under stress. This program explores and discusses: six ways situational awareness can be impacted by physical and mental stress. A seven step process for how experts make decisions in high stress, dynamic, rapidly changing environments; The four essential components needed to make decisions under stress. How decision making is influenced by pattern matching, mental modeling, sense-making and information chunking. Three levels of situational awareness including how to develop and maintain each.

Water Rescue – Cold Water Emergencies (E/F) Course 401

WITC Staff
(See description on page 3)
Max Enroll 20

Advanced Vehicle Systems / Alternative Extrication Techniques (E/F)

Butch Lysholm & Ron Shaw

(See description page 5)

Course 407

EMT 8 hour Basic Refresher (E/F)

Course 408

Linda Avery Patz, Marlene Dirkes & WITC Staff

This session will incorporate what's new in EMS to bring students up to date on the latest innovations and guidelines in pre-hospital emergency care. There will be 3 practical stations for students to test their skills and a final written exam. This session is to be used in conjunction with 24 hours of continuing education to qualify for your EMT Basic refresher training.

Max Enroll 24

Prerequisite - Current EMT License

Truck Company Skills / Incident Management (F) Course 409

WITC Staff
(See description page 5)
Max Enroll 24

Class Full/Closed

Class Full/Closed

Saturday Morning Classes (4 hour)

Confined Space and Trenching Emergencies – Awareness (E/F) Course 402

WITC Staff
(See description on page 4)

Domestic Violence Injuries (E) Course 403

Julie Schuppel, RN

(See description on page 8)

The Art of Reading Smoke (F) Course 404

Greg Hayes

(See description on page 8)

Environmental Emergencies (E/F) Course 405

Ben Wedro, MD, FACEP, FAAEM

(See description on page 8)

The Big Bad Wolf of Pediatric EMS (E) Course 406

Sarah House, MICT

(See description on page 8)

In the Crosshairs (E/F) Course 410

Eric Dickinson, BS, EMT-I Iowa County EMS

School shootings, workplace violence and terrorism lead the headlines regularly. This first session provides an overview of EMS involvement and lessons learned during prior domestic and international incidents. It will explain the primary responsibilities and concerns of various emergency response agencies, demonstrate the threat posed by various weapons that have been used to target EMS providers, review the likely injuries and treatment most common during these types of incidents and review the simple steps your agency can take to prepare for the possibility of a violent MCI in your area.

The second part of this course will provide students with an overview of less lethal weapons used by law enforcement officers and explain the mechanisms of injury or other conditions that may result from their use and describe the assessment and treatment that may be necessary.

Saturday Afternoon Classes (4 hour)

Multi-Gas Air Monitors: How to Use Them Effectively (E/F)

WITC Instructor

(See Description on page 7)

Course 411

Geriatric Emergencies Come In all Shapes and Sizes (E) Course 415

Dr. Richard Pebler

(See description on page 8)

Ice Rescue Refresher Training

WITC Instructor

Max
Class Full/Closed
Ice Rescue Training
(See description on page 4)

Course 412

Traumatic Brain Injury (E) Course 416

Lee Kennedy, EMS Teaching Specialist

This session deals with the advances in pre-hospital care of patients who have suffered a traumatic brain injury.

The presenter is a seasoned paramedic with many years in the EMS field who has seen his share of patients with traumatic brain injuries.

Trauma 911 – A PEDIATRIC PERSPECTIVE (E)

Course 413

Sarah House, MICT

(See description on page 8)

Foam & CAFS Use & Operation (E) Course 417

Clarence Green

M

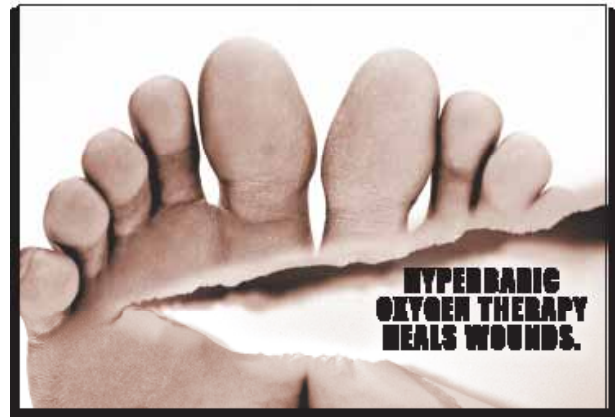
Course 414

End of the PALS Algorithm (E)

James Levi

(See description on page 8)

Class Full/Closed



When you've tried everything else, consider hyperbaric oxygen therapy - a painless way to help your body heal, especially for wounds that linger. We have a proven success rate for healing wounds, so ask your doctor if hyperbaric medicine might be right for you. Then breathe a sigh of relief.

Call 715.268.0175 for an evaluation.

Covered by most insurance plans.

230 Deronda Street
Amery, WI 54001

WOUND HEALING CENTER
a division of Amery Regional Medical Center

Lodging Information

Motel	Contact	Phone	Address
AmericInn	Kristine Ash	715-234-9060 - <u>Do NOT</u> call national toll free #	2906 Pioneer Avenue Rice Lake, WI 54868
Pool, whirlpool, continental breakfast			
Best Western Inn		715-234-7017 - <u>Do NOT</u> call national toll free #	2835 South Main Street Rice Lake, WI 54868
Pool, hot tub, complimentary breakfast, fitness center, high speed internet..			
Days Inn	Don Skopec	715-234-4444 - <u>Do NOT</u> call national toll free #	1710 Main Street Rice Lake, WI 54868
Pool, whirlpool, continental breakfast. NOTE: Mention rate cost SCN2 and that you are attending the WITC Emergency Services Conference.			
Microtel	Chuck	715-736-2010 or 888-202-4223	2771 Decker Drive Rice Lake, WI 54868
Continental breakfast, fitness center, high speed internet.			
Rice Lake Super 8	Diane Foust	715-234-6956- <u>Do NOT</u> call national toll free #	2401 S Main Street Rice Lake, WI 54868
Continental breakfast			
Currier's Lakeview Resort Motel		800-433-5253	2010 20-1/4 Street Rice Lake, WI 54868
Continental breakfast			
Chetek Super 8		715-924-4888	115 2nd Street Chetek, WI 54728
Continental breakfast, pool, hot tub			(16 mile from campus)
Country Lodge of Turtle Lake		715-986-2070	636 US Hwy 8 Turtle Lake, WI 54889
Pool, Whirlpool, continental breakfast, free high speed internet.			(26 miles from campus)
St. Croix Casino & Hotel		800-846-8946	777 US Hwy 8 63 Turtle Lake, WI 54889
Pool, whirlpool, exercise room, continental breakfast,			(26 miles from campus)
Cumberland Inn and Suites		715-833-5655	1650 Elm Street Cumberland, WI 54829
Pool, whirlpool, wireless internet, continental breakfast			(18 miles from campus)

Be sure to mention you are attending the WITC Emergency Services Conference so you get the correct room rate.
REGISTER EARLY for MOTEL as there are other events being held in town the same weekend.

For lodging information, go to www.ricelaketourism.com

EMERGENCY SERVICES CONFERENCE 2012 REGISTRATION – PAGE 1

Name (Last, First, MI)		Student ID # OR Social Security #		Date of Birth (month,day,year)	
Maiden Name (if applicable)		Street Address		City, State, Zip	
School District – Legal Resident of Student		Township/Village/City		County	
State		Home Phone		Work Phone	
Cell Phone		Email Address			
Name of High School (Required if under age 23)		City & State of High School		Year Graduated	Highest Grade Completed
GED Year _____		HSED Year _____			

All prospective students in good standing are admitted into course if class space is available upon submission of this registration form. The following information is requested for state and federal reporting purposes.

Gender: Male Female

Racial Identity: check all that apply Black/African American Asian White

Native Hawaiian/Other Pacific Islander American Indian/Alaska Native

Ethnicity: Hispanic/Latino (Cuban, Mexican, Puerto Rican, South/Central American or other Spanish culture or origin (regardless of Race)

Conference Fees	*Early Bird Pay & Register before midnight 1/31/12	Regular Fees After 1/31/12	Payment Method (Payable to WITC) Check or Money Order <input type="checkbox"/> Cash <input type="checkbox"/> Credit Card: MasterCard <input type="checkbox"/> Visa <input type="checkbox"/> Discover <input type="checkbox"/> Credit Card # _____ Name on Credit Card _____ Exp. Date ____ - ____ Signature _____
4 hours	\$45/xxx	\$60/xxx	
8 hours	\$80/xxx	\$100/xxx	
12 hours	\$130/xxx	\$150/xxx	
16 hours	\$160/xxx	\$200/xxx	
20 hours	\$xxx/xxx	\$xxx/xxx	
24 hours	\$xxx/xxx	\$xxx/xxx	
/(Senior rate)			FOR OFFICE USE ONLY Term _____ Employer # _____ Course Fees \$ _____ Rec'd by _____ Date _____

* To receive the Early Bird discount price, your registration form **AND CHECK, CASH, OR CREDIT CARD #** must be received/postmarked before midnight on 1/31/2012.

If an agency or employer is paying your tuition, a written authorization **MUST** be filled out.

Authorization for Payment DOES NOT constitute payment for the Early Bird discount.

To receive Early Bird discount, CHECK, CASH, OR CREDIT CARD # must accompany registration form.

This form is Authorization For Payment to Wisconsin Indianhead Technical College for the following person who is attending the WITC Emergency Services Conference 2012.

Employer/Sponsor/Agency _____

Address _____ City/State/ZIP _____

Telephone _____ Email _____

Authorizing Signature _____ Authorizing Name (print) _____

Name of Student _____ Days of Attendance _____

NOTE: Authorization for Payment DOES NOT constitute payment for the early bird discount. To receive early bird discount, check, cash, or credit card # MUST accompany registration form. If you have any questions, please contact Jamie Warnberg at 800-243-9482, Ext. 5488. Early bird deadline is midnight, January 31, 2012

2012 Emergency Services Conference Break-out choices

Student Name _____ Agency Name _____

Directions:

- 1) Read through the session descriptions and choose the all day (8 hour) or half day (4 hour) sessions you want to attend
- 2) Place an 'x' in front of each session day/time you will attend on the left side of the day
- 3) Write the class number you want to attend in the appropriate line on the right side of the day; add second choice and third choice in case first choice session is filled or closed

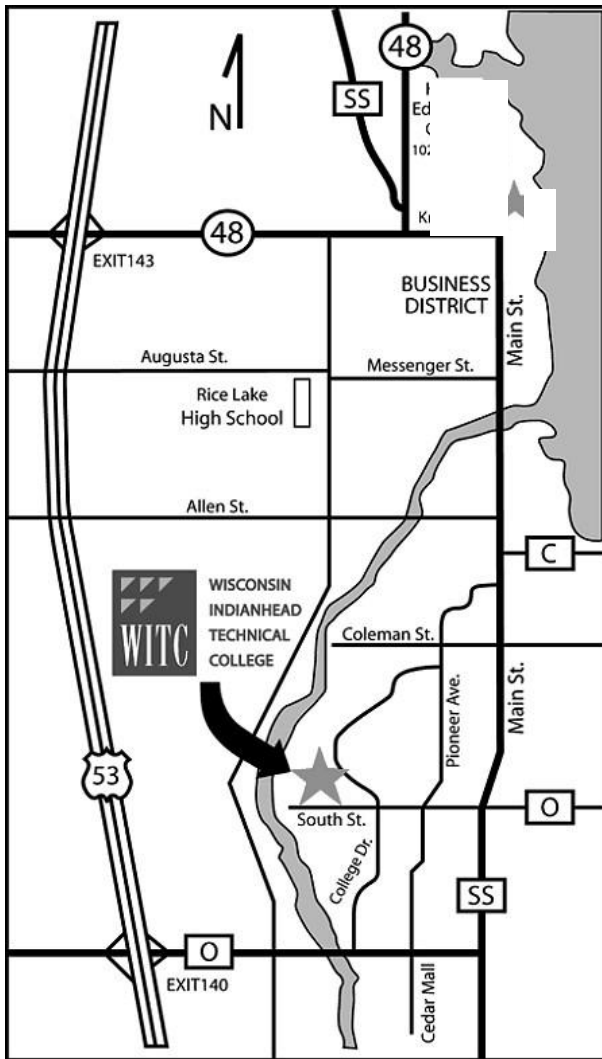
		First choice	Second Choice	Third Choice
_____	Thursday – 8 hr	_____	_____	_____
_____	Thursday pm – 4 hr	_____	_____	_____
_____	Friday – 8 hr	_____	_____	_____
_____	Friday am – 4 hr	_____	_____	_____
_____	Friday pm – 4 hr	_____	_____	_____
_____	Fri-Sat – 16 hr Wilderness Search (60 students max) Please fill out second and third choice for Friday and Saturday	_____	_____	_____
_____	Saturday – 8 hr	_____	_____	_____
_____	Saturday am – 4 hr	_____	_____	_____
_____	Saturday pm – 4 hr	_____	_____	_____

_____ = **Total hours of instruction for the conference**

Conference To Be Held At:

WITC-Rice Lake Campus

1900 College Drive, Rice Lake, WI 54868



**Attention Family Members
of Conference Attendees**

We have set up some non-conference classes for your opportunity to learn a new skill. Go to <https://e-witc.com/coursesii/search.asp> to search and register for course offerings available on Saturday, March 17.

- Digital Camera
- Zumba
- Kid's Snacks
- Family & Friends CPR
- Smartphone
- Kid's Crafts
- Smashbook

Students, come into the WITC building through the Main Entrance, #3 on map, which has a blue canopy at the entrance.

